

NOTES:

1. The MEDTHERM TC-C'L'12EZ'(TT)'Y'-11383 is a high temperature Tungsten 5% Rhenium vs. Tungsten 26% Rhenium exposed tip junction thermocouple probe made with Ø.125 Tantalum sheath with compacted beryllium oxide insulation. The wire size inside the sheath is 0.010 Inch diameter.

2. To specify the thermocouple, provide the following items in the part number:

"L"- Probe length, inches (use 2 digits or more)

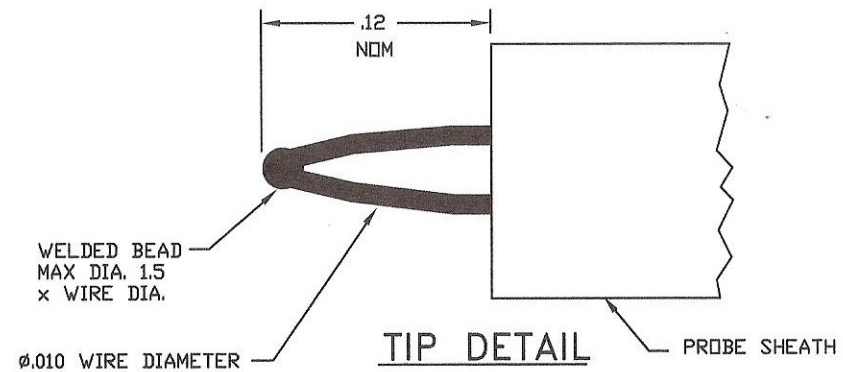
"Y"- Lead length, feet (unless the 3 ft. std. length is desired)

Example: A Tungsten 5% Rhenium vs. Tungsten 26% Rhenium (Type C) probe 6' long with 6 ft. leads; P/N TC-C0612EZ(TT)6-11383

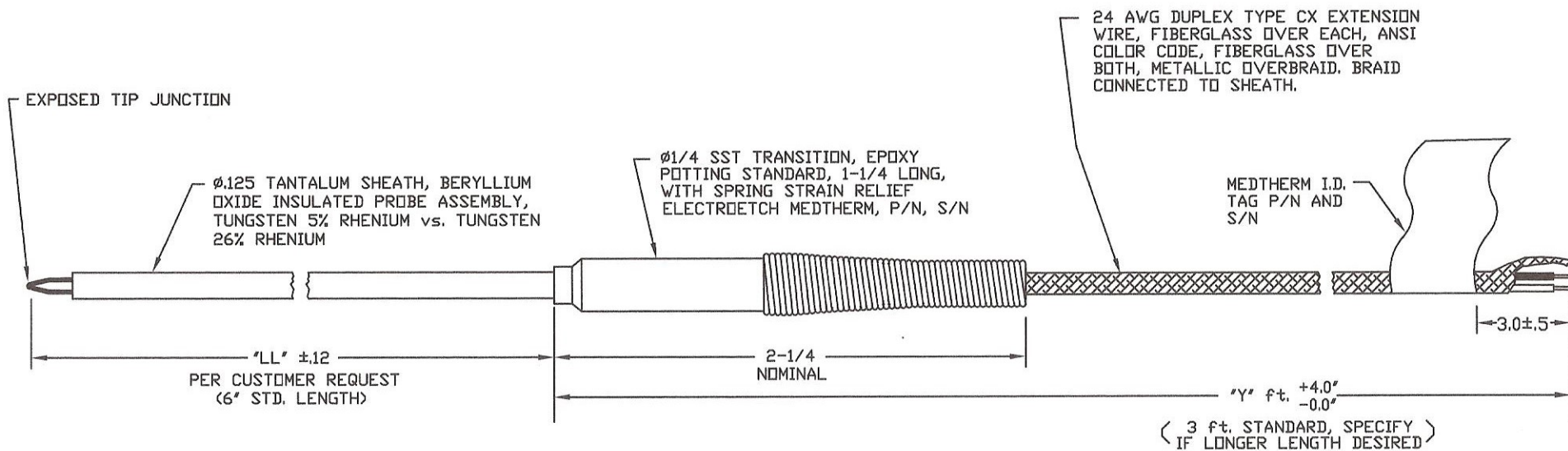
3. To specify high temperature ceramic potting material (1000°F) in the transition, add suffix C to the part number.

4. Compression fittings (1/16 NPT, 1/8 NPT, 1/4 NPT, 1/2 NPT) are available in both fixed ferrule and variable immersion type.

5. Standard or miniature size thermocouple connectors are available attached to the leadwire.



UNLESS OTHERWISE SPECIFIED DIMENSIONS ARE IN INCHES TOLERANCES			THERMOCOUPLE HIGH TEMPERATURE, TYPE C EPOXY SEALED EXPOSED TIP JUNCTION TEFLON INSULATED LEADWIRE P/N: TC-C'L'12EZ'(TT)'Y'-11383		MEDTHERM CORPORATION POST OFFICE BOX 412 HUNTSVILLE, ALABAMA 35804	
FRACTIONS ±1/32	DECIMALS 2PL ±.01 3PL ±.005	ANGLES ±1°				
MATERIAL	NOTED	SCALE:	DES.	DWG SIZE	REV	B 11383 SHEET OF
FINISH		ORIG. DWG 8/11/64	CHK.			
		CAD DWG 2/16/02	APP. <i>DSJ</i>			



NOTES:

1. The MEDTHERM TC-C'L'12EZ'Y'-11366 is a high temperature Tungsten 5% Rhenium vs. Tungsten 26% Rhenium exposed tip junction thermocouple probe made with Ø.125 Tantalum sheath with compacted beryllium oxide insulation. The wire size inside the sheath is 0.020 inch diameter.

2. To specify the thermocouple, provide the following items in the part number:

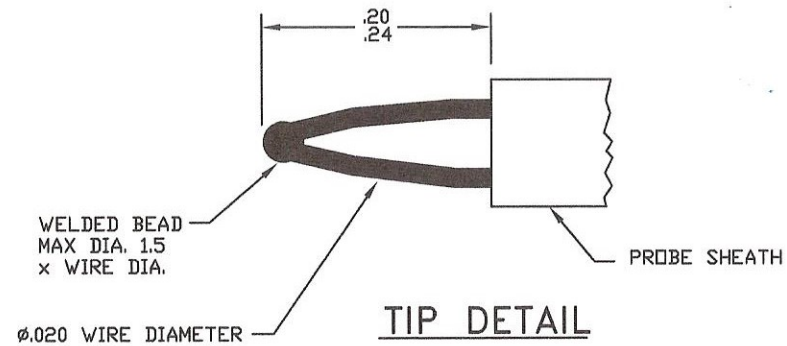
"L"- Probe length, inches (use 2 digits or more)

"Y"- Lead length, feet (unless the 3 ft. std. length is desired)

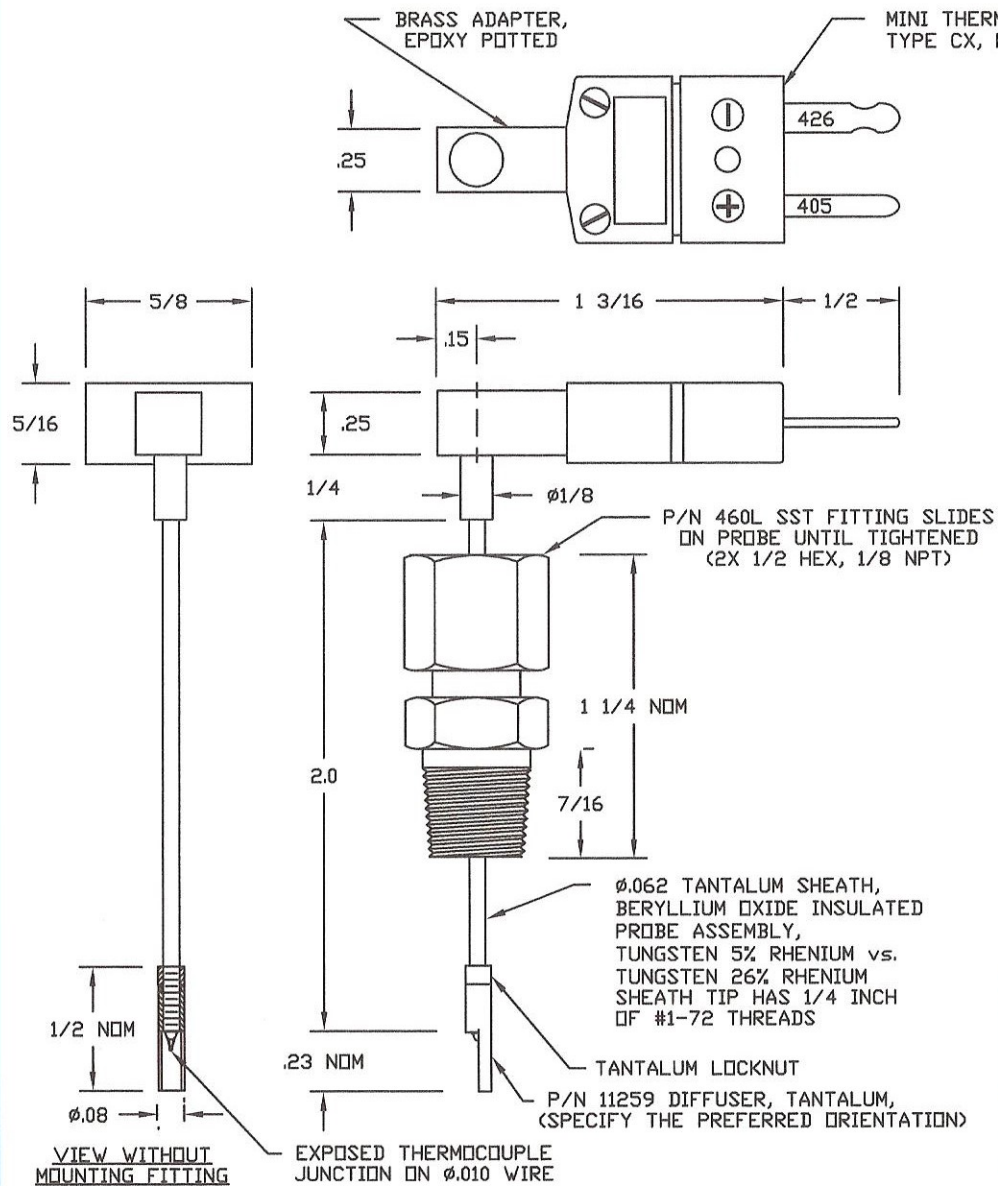
Example: A Tungsten 5% Rhenium vs. Tungsten 26% Rhenium (Type C) probe 6" long with 6 ft. leads; P/N TC-C0612EZ6-11366

3. To specify high temperature ceramic potting material (1000°F) in the transition, add suffix C to the part number.

4. Compression fittings (1/16 NPT, 1/8 NPT, 1/4 NPT, 1/2 NPT) are available in both fixed ferrule and variable immersion type.



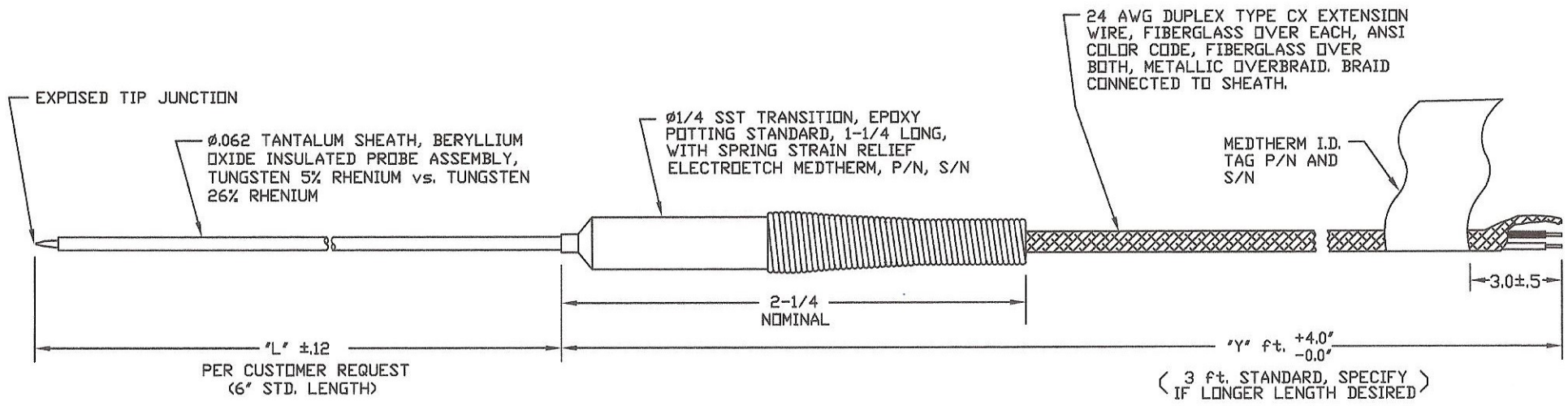
UNLESS OTHERWISE SPECIFIED DIMENSIONS ARE IN INCHES TOLERANCES			THERMOCOUPLE HIGH TEMPERATURE, TYPE C 0.020" WIRE, EXPOSED TIP JUNCTION MODEL: TC-C'L'12EZ'Y'-11366		MEDTHERM CORPORATION POST OFFICE BOX 412 HUNTSVILLE, ALABAMA 35804	
FRACTIONS	DECIMALS	ANGLES				
± 1/32	2PL ± .01 3PL ± .005	± 1°	MATERIAL NOTED		SCALE:	DES.
FINISH			DR. GMG		ORIG. DWG 8/11/64	CHK.
			APP. <i>DLB</i>		CAD DWG 2/16/02	DR. GMG
					SHEET	REV
					B 11366	OF



NOTES:

1. MEDTHERM P/N TCFW203-02(W5W26)100-MP-T-11272/11259 is a high temperature Tungsten 5% Rhenium vs. Tungsten 26% Rhenium (Type C) exposed bare-wire Junction thermocouple probe with $\phi.010$ wire. This high temperature probe is made with $\phi.062$ Tantalum sheath with compacted BeO insulation.
2. P/N 460L, a 1/8 NPT male variable immersion fitting with crushable lava sealing gland is supplied finger-tight on the probe for mounting. Install the fitting in the 1/8NPT female port, set the desired immersion depth, and tighten the fitting gland nut to seal.
3. A tantalum half-cylinder diffuser, P/N 11259 is attached to the probe end by the 1-72 threads. A tantalum locknut allows alignment of the diffuser to protect the thermocouple junction from direct impingement by particles in the flow. Specify the preferred orientation to be assembled at the factory.
4. Maximum temperatures for different areas of the probe are:
 Thermocouple and tantalum parts: 5000F (brief exposure)
 SST mounting fitting: 1800F
 Brass adapter and connector: 400F

UNLESS OTHERWISE SPECIFIED DIMENSIONS ARE IN INCHES TOLERANCES			THERMOCOUPLE HIGH TEMPERATURE, TYPE C EXPOSED WIRE JUNCTION WITH TA HALF CYLINDER DIFFUSER AND 1/8 NPT MOUNTING FITTING		MEDTHERM CORPORATION POST OFFICE BOX 412 HUNTSVILLE, ALABAMA 35804	
FRACTIONS $\pm 1/32$	DECIMALS 2PL $\pm .01$ 3PL $\pm .005$	ANGLES $\pm 1^\circ$				
MATERIAL NOTED			SCALE:	DES.	DWG SIZE	REV
FINISH			ORIG. DWG	CHK.	B 11272	
			CAD DWG 12 / 18 / 99	APP. <i>DSJ</i>	SHEET	OF



NOTES:

1. The MEDTHERM TC-C'L'06EZ'Y'-11268 is a high temperature Tungsten 5% Rhenium vs. Tungsten 26% Rhenium exposed tip junction thermocouple probe made with Ø.062 Tantalum sheath with compacted beryllium oxide insulation.

2. To specify the thermocouple, provide the following items in the part number:

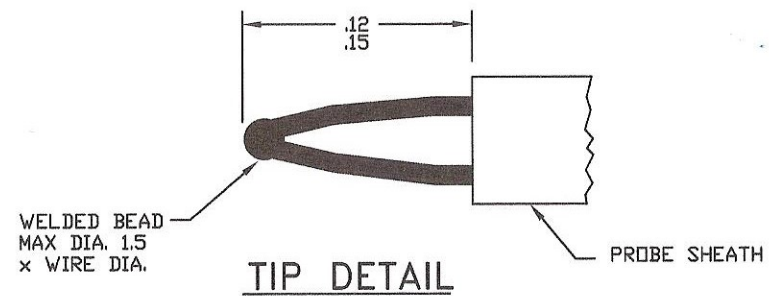
"L"- Probe length, inches (use 2 digits or more)

"Y"- Lead length, feet (unless the 3 ft. std. length is desired)

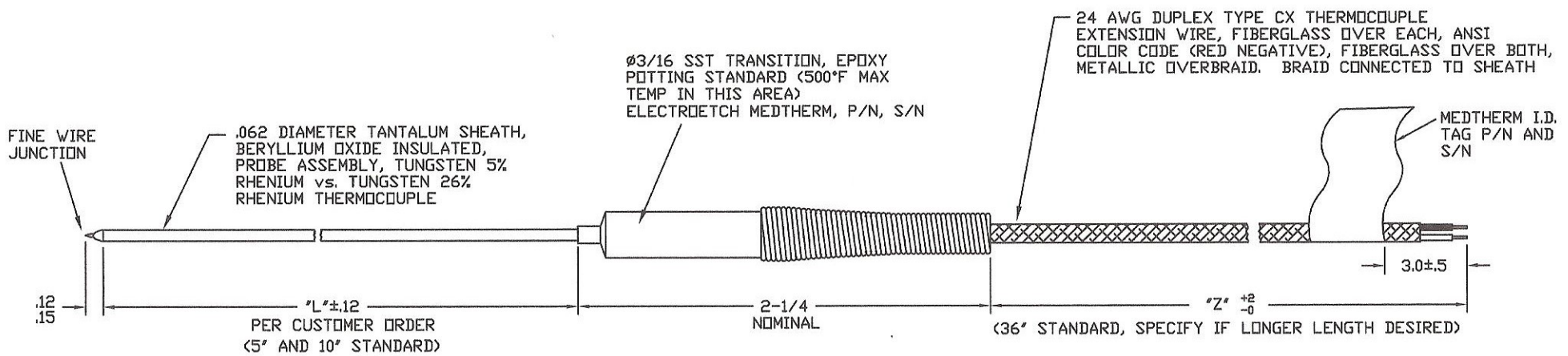
Example: A Tungsten 5% Rhenium vs. Tungsten 26% Rhenium (Type C) probe 6" long with 6 ft. leads; P/N TC-C0606EZ6-11268

3. To specify high temperature ceramic potting material (1000°F) in the transition, add suffix C to the part number.

4. Compression fittings (1/16 NPT, 1/8 NPT, 1/4 NPT, 1/2 NPT) are available in both fixed ferrule and variable immersion type.



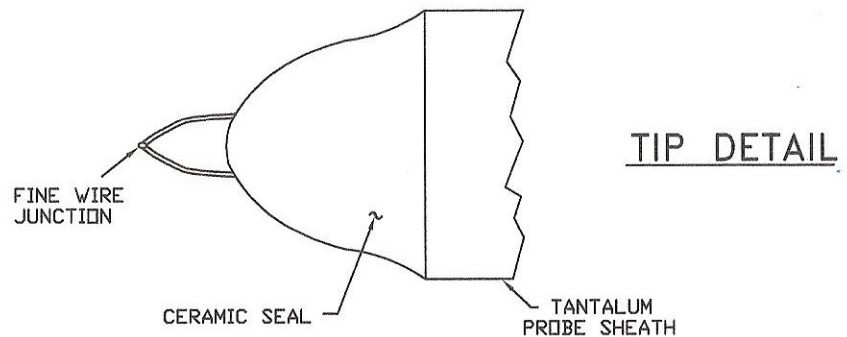
UNLESS OTHERWISE SPECIFIED DIMENSIONS ARE IN INCHES TOLERANCES			THERMOCOUPLE HIGH TEMPERATURE, TYPE C EXPOSED TIP JUNCTION MODEL: TC-C'L'06EZ'Y'-11268		MEDTHERM CORPORATION			
FRACTIONS	DECIMALS	ANGLES						
± 1/32	2PL ± .01 3PL ± .005	± 1°	SCALE: ORIG. DWG 8/11/64 CAD DWG 5/23/96 DR. GMG		DES. CHK. APP. <i>DLB</i>		POST OFFICE BOX 412 HUNTSVILLE, ALABAMA 35804 DWG SIZE B 11268 SHEET OF	
MATERIAL NOTED								
FINISH								
REV 11268								



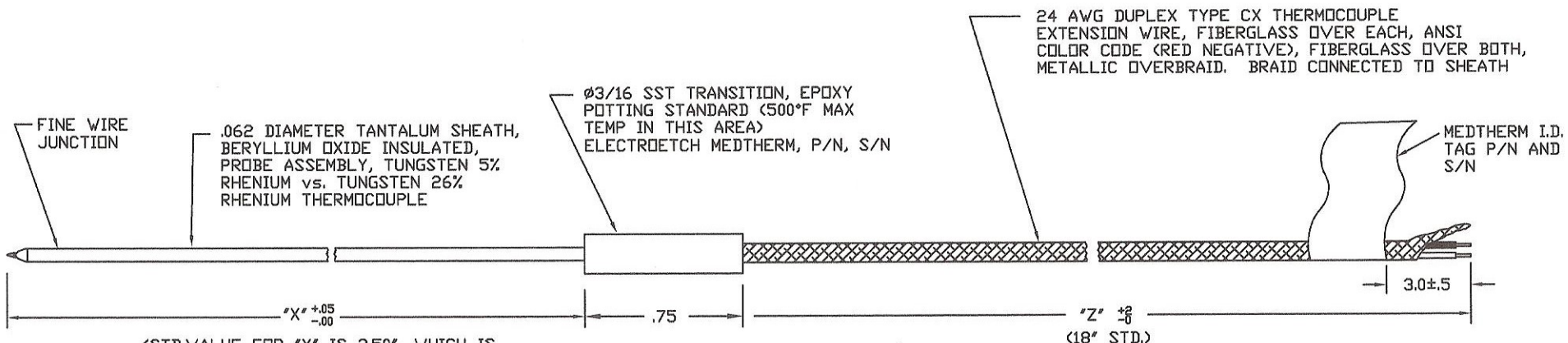
FINE WIRE T/C JUNCTION, "WW" CODE DIAMETER	
WIRE DIA	"WW" CODE
.003	30
.005	50
.010	100

NOTES:

1. The MEDTHERM TCFW-203-"L" C "WW"- "Z"-11129 fine wire thermocouple probe provides a rugged mounting method for inserting tungsten 5% rhenium vs tungsten 26% rhenium (Type C) fine wire thermocouple junctions for precise rapid response high temperature, short duration gas temperature measurements.
2. To specify the thermocouple, provide the following items in the part number:
 "L"- Probe length inches
 "WW"- Thermocouple fine wire diameter code from the table above
 "Z"- Leadwire length, inches
3. To specify high temperature ceramic potting material (1000°F) in the transition, add suffix C to the part number.
4. To add 1/4 inch of #1-72 thread on the tip of the #1/16 inch stem for attachment of a tantalum radiation shield, add suffix T to the part number.
5. Compression fittings (1/16 NPT, 1/8 NPT, 1/4 NPT, 1/2 NPT) are available in both fixed ferrule and variable immersion type.



UNLESS OTHERWISE SPECIFIED DIMENSIONS ARE IN INCHES TOLERANCES			FINE WIRE THERMOCOUPLE HIGH TEMPERATURE		MEDTHERM CORPORATION	
FRACTIONS ±1/32	DECIMALS 2PL ± .01 3PL ± .005	ANGLES ± 1°	TUNGSTEN 5% RHENIUM VS TUNGSTEN 26% RHENIUM		POST OFFICE BOX 412 HUNTSVILLE, ALABAMA 35804	
MATERIAL NOTED			P/N:TCFW-203-"L" C "WW"- "Z"-11129		SHEET OF	
FINISH			SCALE:	DES.	DWG SIZE	REV
			ORIG. DWG 1/1/88		B 11129	
			CAD DWG 8/25/95	CHK.		
			DR. <i>C. P. ...</i>	APP. <i>D. J. ...</i>		



(STD. VALUE FOR "X" IS 3.50", WHICH IS THE REPLACEMENT THERMOCOUPLE FOR THE TC-W5W26-1.0-"WW"-Z"-10981 PROBE)

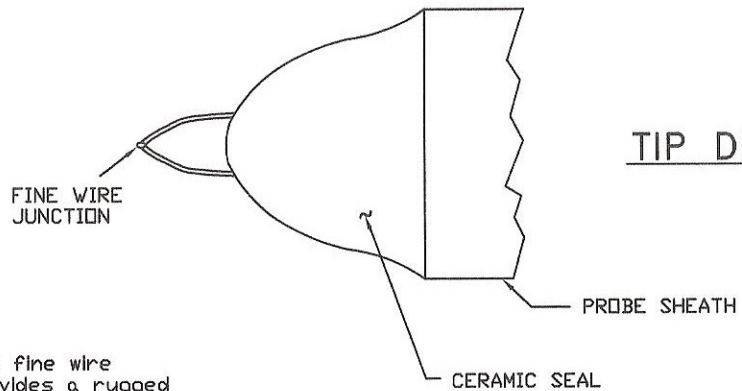
24 AWG DUPLEX TYPE CX THERMOCOUPLE EXTENSION WIRE, FIBERGLASS OVER EACH, ANSI COLOR CODE (RED NEGATIVE), FIBERGLASS OVER BOTH, METALLIC OVERBRAID. BRAID CONNECTED TO SHEATH

.062 DIAMETER TANTALUM SHEATH, BERYLLIUM OXIDE INSULATED, PROBE ASSEMBLY, TUNGSTEN 5% RHENIUM vs. TUNGSTEN 26% RHENIUM THERMOCOUPLE

Ø3/16 SST TRANSITION, EPOXY POTTING STANDARD (500°F MAX TEMP IN THIS AREA) ELECTROETCH MEDTHERM, P/N, S/N

MEDTHERM I.D. TAG P/N AND S/N

TIP DETAIL



FINE WIRE T/C JUNCTION, "WW" CODE DIAMETER	
WIRE DIA	"WW" CODE
.003	30
.005	50
.010	100

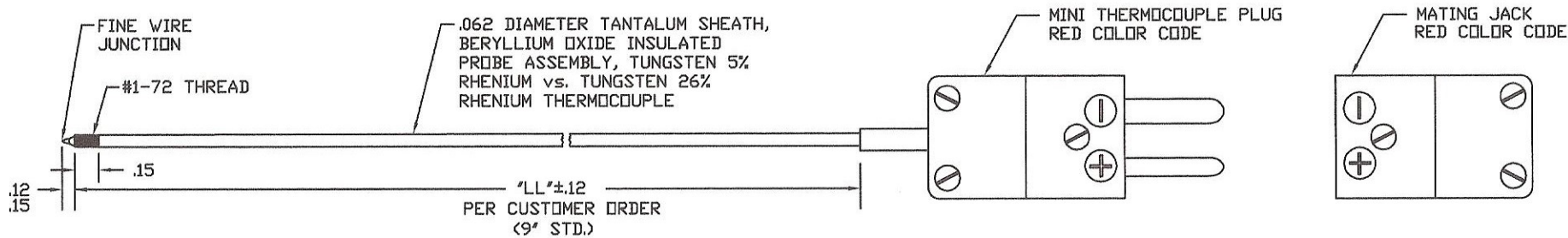
NOTES:

- The MEDTHERM TCFW-W5W26-"X"- "WW"- "Z"-11003 is the replacement fine wire thermocouple for the TC-W5W26-"L"- "WW"- "Z"-10981 probe which provides a rugged mounting method for inserting a fine wire thermocouple junction for precise rapid response gas temperature measurement.
- To specify the thermocouple, provide the following items in the part number:
 - "X"- Length of the replacement probe, inches (Compute as 2.50" longer than the "L" value in the TC-W5W26-"L"- "WW"- "Z"-10981 probe)
 - "WW"- Thermocouple fine wire diameter code from the table above
 - "Z" - Leadwire length, inches
- A replacement SST compression fitting ferrule will be supplied with each replacement thermocouple.

UNLESS OTHERWISE SPECIFIED		
DIMENSIONS ARE IN INCHES		
TOLERANCES		
FRACTIONS	DECIMALS	ANGLES
±1/32	2PL ± .01 3PL ± .005	± 1°
MATERIAL		
NOTED		
FINISH		

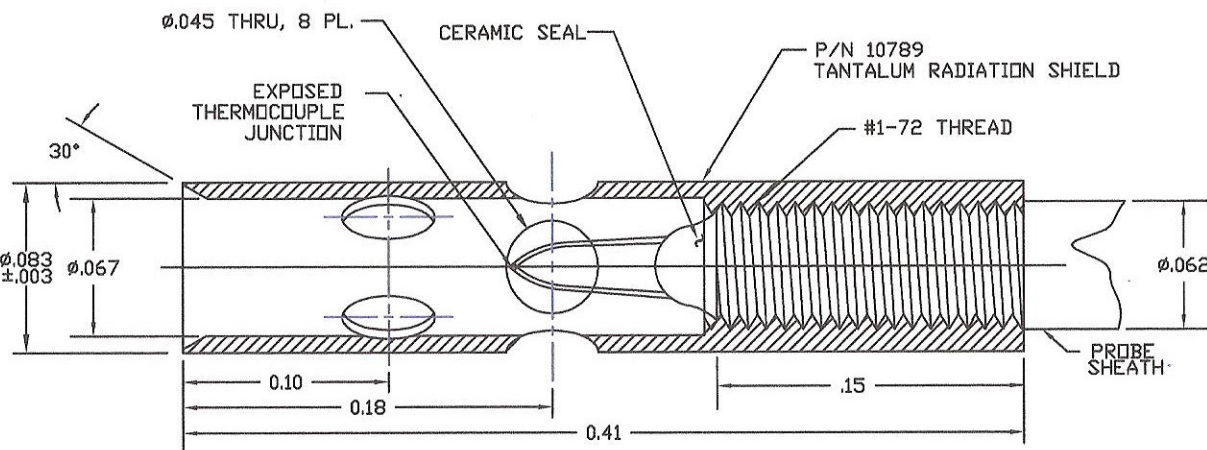
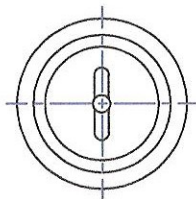
FINE WIRE THERMOCOUPLE	
HIGH TEMPERATURE	
TUNGSTEN 5% RHENIUM VS TUNGSTEN 26% RHENIUM	
P/N:TCFW-W5W26-"X"- "WW"- "Z"-11003	
SCALE:	DES.
ORIG. DWG 1/11/94	CHK.
CAD DWG 4/20/94	APP. <i>DRP</i>
DR. <i>G. Peters</i>	APP. <i>DRP</i>

MEDTHERM CORPORATION	
POST OFFICE BOX 412 HUNTSVILLE, ALABAMA 35804	
DWG SIZE	REV
B 11003	
SHEET	OF



**TYPE C THERMOCOUPLE PROBE
SHOWN WITHOUT RADIATION SHIELD**

FINE WIRE T/C JUNCTION, "WW" CODE DIAMETER	
WIRE DIA	"WW" CODE
.003	30
.005	50
.010	100



**DETAIL OF 10789 RADIATION SHIELD
INSTALLED ON PROBE**

NOTES:

1. The MEDTHERM TC-W5W26(TaBeO)-"LL"06-"WW"-EMPJ-10739 is an exposed junction high temperature thermocouple probe with a P/N 10789 tantalum radiation shield. The tungsten 5% rhenium vs. tungsten 26% rhenium (Type C) wire thermocouple is designed for precise rapid response high temperature, short duration gas temperature measurements. The probe can also be ordered without the radiation shield and without the mating Jack.

2. To specify the thermocouple, provide the following items in the part number:

- "LL"- Probe length, inches (9' std.)
- "WW"- Wire size code from table (100 std.)

3. The tantalum probe sheath has 0.15 inch of #1-72 thread on the tip of the ϕ 1/16 inch stem for attachment of a MEDTHERM P/N 10789 tantalum radiation shield.

4. Compression fittings (1/16 NPT, 1/8 NPT, 1/4 NPT, 1/2 NPT) are available in both fixed ferrule and variable immersion type for mounting the probe.

UNLESS OTHERWISE SPECIFIED DIMENSIONS ARE IN INCHES TOLERANCES			HIGH TEMPERATURE TYPE C THERMOCOUPLE WITH TANTALUM RADIATION SHIELD TC-W5W26(TaBeO)-"LL"06-"WW"-EMPJ-10739		MEDTHERM CORPORATION POST OFFICE BOX 412 HUNTSVILLE, ALABAMA 35804	
FRACTIONS $\pm 1/32$	DECIMALS 2PL $\pm .01$ 3PL $\pm .005$	ANGLES $\pm 1^\circ$				
MATERIAL NOTED			SCALE:	DES.	DWG SIZE	REV
FINISH			ORIG. DWG 8/9/66	CHK.	B 10739 A	
			CAD DWG 6/28/96	APP. <i>DSB</i>		
			DR. GMG			